

POLYSTRAND™
CONTINUOUS FIBER
REINFORCED
THERMOPLASTIC
TAPES & LAMINATES

TYPICAL PROPERTIES - UNIDIRECTIONAL FIBERGLASS REINFORCED THERMOPLASTIC TAPE

Product Name	Resin	Fiber Content	Areal Weight			Nominal Thickness ¹		Flexural Modulus ASTM D790		Flexural Strength ASTM D790		Tensile Modulus ASTM D3039		Tensile Strength ASTM D3039	
			wt %	lb/ft ²	oz/yd ²	gsm	in	mm	ksi	GPa	ksi	MPa	ksi	GPa	ksi
6337	PP	63	0.10	14.75	500	0.015	0.38	3570	24.6	58	402	4010	27.6	111	765
6531			0.05	7.40	251	0.006	0.15	4020	27.7	73	505	4900	33.8	140	965
6536		65	0.07	10.32	350	0.009	0.23	4050	27.9	72	494	4500	31.0	131	903
6538			0.14	19.77	670	0.019	0.48	3540	24.4	47	324	4260	29.4	100	689
7034B	PP-Black	70	0.07	10.24	347	0.009	0.23	4400	30.3	83	569	5000	34.5	111	765
6020	PE	60	0.08	11.95	405	0.012	0.30	3600	24.8	54	372	3800	26.2	109	752
6621		66	0.10	13.97	474	0.012	0.30	4000	27.6	55	379	4720	32.5	126	869
6822 ²		68	0.16	23.34	791	0.022	0.56	4060	28.0	55	379	4560	31.4	113	779
5843	PETG	58	0.08	11.85	402	0.008	0.20	3680	25.4	90	621	4400	30.3	137	945
5840B	aPET-Black	58	0.09	13.00	441	0.009	0.23	4120	28.4	107	738	5080	35.0	150	1034
5860B	PA6-Black	58	0.08	11.48	389	0.010	0.25	3620	25.0	104	717	3970	27.4	108	745

¹ Nominal thicknesses indicated are baseline values that may vary depending on material processing and other variables. Contact Avient with your specific requirements.

² 6822 is only available in unidirectional tape—not as a multi-ply laminate.

TAPE LINE CAPABILITIES

Tape Width	Resin Capabilities	Fiber Inputs	Max Tape Roll Weight	Max Roll Length
25" (635 mm) Standard Width, Slit Capabilities	PP, PE, PETG, aPET, PA6 Additional polymers in development	E-Glass S-Glass, Aramid	Up to 1,800 lbs (816 kg)	Up to 12,000 ft (366 m)

LAMINATION LINE CAPABILITIES

Max Unfinished Width	Max Finished Slit Width	Max Finished Roll Weight	Max Roll Length (X-Ply™, Full Width)
Up to 125" (3175 mm)	Up to 120" (3048 mm)	Up to 10,000 lbs (4500 kg)	Up to 4,000 ft (1200 m)

SLITTING CAPABILITIES

Material	Min Finished Slit Width	Max Finished Slit Width
Unidirectional Tape	2" (50.8 mm)	24" (610 mm)
X-Ply™, 3-Ply, 4-Ply	2" (50.8 mm)	120" (3048 mm)

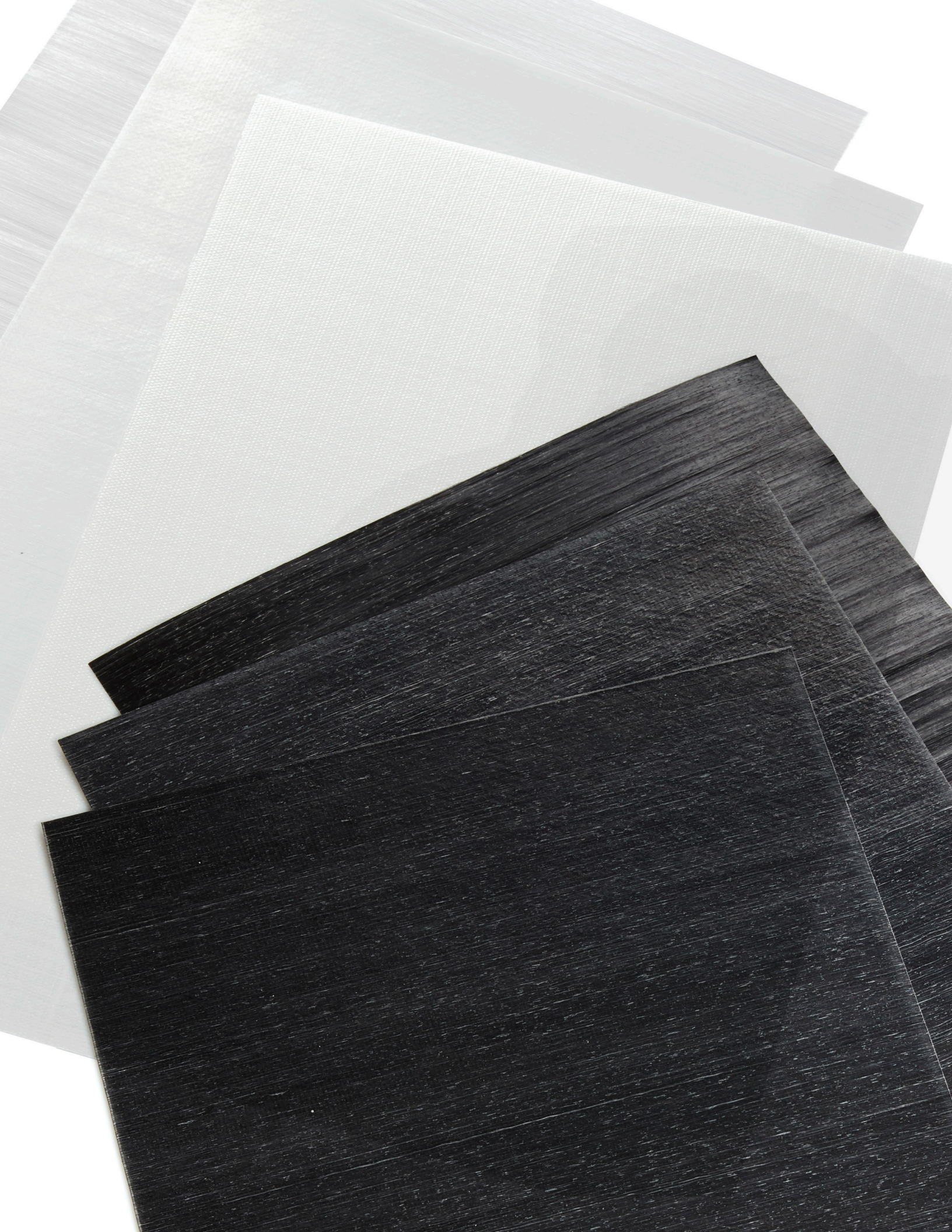


TYPICAL PROPERTIES - MULTI-AXIAL LAMINATES

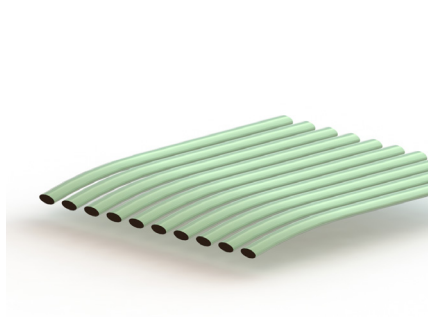
Product Name	Resin	Fiber Content	Laminate Layers & Orientation	0° Testing Orientation									90° Testing Orientation											
				Areal Weight			Nominal Thickness ¹		Flexural Modulus ASTM D790		Flexural Strength ASTM D790		Tensile Modulus ASTM D3039		Tensile Strength ASTM D3039		Flexural Modulus ASTM D790		Flexural Strength ASTM D790		Tensile Modulus ASTM D3039		Tensile Strength ASTM D3039	
				lb/ft ²	oz/yd ²	gsm	in	mm	ksi	GPa	ksi	MPa	ksi	GPa	ksi	MPa	ksi	GPa	ksi	MPa	ksi	MPa	ksi	GPa
6337	PP	63	0/90	0.20	29.49	1000	0.031	0.79	-	-	-	-	2020	13.9	59.7	412	-	-	-	-	2020	13.9	59.7	412
			0/90/0	0.31	44.24	1500	0.045	1.14	2250	15.5	46.4	320	3070	21.2	79.4	547	186	1.3	9.7	67	1330	9.2	39.6	273
			0/90/90/0	0.41	58.98	2000	0.057	1.45	2000	13.8	44.0	303	2400	16.5	60.6	418	496	3.4	20.7	143	2210	15.2	56.4	389
6531		65	0/90	0.10	14.80	502	0.014	0.36	-	-	-	-	2240	15.4	60.9	420	-	-	-	-	2240	15.4	60.9	420
			0/90/0	0.15	22.20	753	0.020	0.50	2650	18.3	58.3	402	3100	21.4	82.8	571	280	1.9	NB ²	NB ²	1670	11.5	42.5	293
			0/90/90/0	0.21	29.61	1004	0.027	0.68	2260	15.6	51.5	355	2470	17.0	62.2	429	580	4.0	30.4	210	2310	15.9	59.6	411
6536		65	0/90	0.14	20.71	702	0.021	0.53	-	-	-	-	1980	13.7	60.5	417	-	-	-	-	1980	13.7	60.5	417
			0/90/0	0.22	31.06	1053	0.029	0.74	2309	15.9	48.3	333	2730	18.8	81.5	562	245	1.7	13.0	90	1490	10.3	44.3	305
			0/90/90/0	0.29	41.41	1404	0.037	0.94	2164	14.9	47	324	2170	15.0	59.6	411	512	3.5	25.4	175	2340	16.1	71.2	491
6538	65	0/90	0.27	39.54	1341	0.034	0.86	-	-	-	-	2220	15.3	60.0	414	-	-	-	-	2220	15.3	60.0	414	
		0/90/0	0.41	59.53	2018	0.057	1.44	2825	19.5	40.9	282	2780	19.2	67.6	466	218	1.5	10.2	70	1410	9.7	40.0	276	
		0/90/90/0	0.55	79.37	2691	0.073	1.85	1880	13.0	32.4	223	2060	14.2	54.0	372	478	3.3	18.0	124	2360	16.3	61.0	421	
7034B	PP-Black	70	0/90	0.14	20.48	694	0.016	0.40	-	-	-	-	2680	18.5	62.0	427	-	-	-	-	2680	18.5	62.0	427
			0/90/0	0.21	30.72	1041	0.028	0.71	1750	12.1	55.9	385	3710	25.6	75.1	518	160	1.1	11.3	78	1440	9.9	36.2	250
			0/90/90/0	0.28	40.95	1388	0.036	0.90	1700	11.7	40.4	279	2800	19.3	55.7	384	432	3.0	25.4	175	2350	16.2	52.4	361
6020	PE	60	0/90	0.17	23.90	810	0.023	0.57	-	-	-	-	1830	12.6	52.00	359	-	-	-	-	1830	12.6	52.0	359
			0/90/0	0.25	35.86	1216	0.033	0.84	2265	15.6	40.0	276	2740	18.9	68.2	470	181	1.2	10.0	69	1350	9.3	35.3	243
			0/90/90/0	0.33	47.81	1621	0.044	1.12	1810	12.5	30.0	207	2000	13.8	48.0	331	502	3.5	22.0	152	1820	12.5	46.0	317
6621		66	0/90	0.19	27.94	947	0.025	0.65	-	-	-	-	2280	15.7	60.0	414	-	-	-	-	2280	15.7	60.0	414
			0/90/0	0.29	41.90	1421	0.040	1.01	2490	17.2	37.0	255	2900	20.0	70.0	483	165	1.1	9.7	67	1440	9.9	38.0	262
			0/90/90/0	0.39	55.87	1894	0.053	1.35	1810	12.5	29.0	200	2160	14.9	58.0	400	508	3.5	21.0	145	2170	15.0	53.0	365
5843	PETG	58	0/90	0.16	23.70	804	0.020	0.50	-	-	-	-	2050	14.1	59.6	411	-	-	-	-	2050	14.1	59.6	411
			0/90/0	0.25	35.55	1205	0.030	0.76	2800	19.3	89.0	614	2900	20.0	78.0	538	397	2.7	NB ²	NB ²	1580	10.9	42.5	293
			0/90/90/0	0.33	47.40	1607	0.039	0.99	2540	17.5	72.0	496	2300	15.9	57.7	398	780	5.4	35.0	241	2170	15.0	63.0	434
5840B	aPET-Black	58	0/90	0.18	26.01	882	0.021	0.53	-	-	-	-	2530	17.4	55.3	381	-	-	-	-	2530	17.4	55.3	381
			0/90/0	0.27	39.01	1323	0.032	0.82	2986	20.6	91.1	628	3160	21.8	68.7	474	252	1.7	20.0	138	1580	10.9	36.9	254
			0/90/90/0	0.36	52.01	1763	0.042	1.07	3065	21.1	73.1	504	2570	17.7	54.2	374	813	5.6	37.0	255	2440	16.8	55.6	383
5860B	PA6-Black	58	0/90	0.16	22.95	778	0.021	0.52	-	-	-	-	2190	15.1	56.00	386	-	-	-	-	2190	15.1	56.0	386
			0/90/0	0.24	34.43	1167	0.034	0.86	2510	17.3	117.0	807	2760	19.0	63.7	439	657	4.5	22.2	153	1630	11.2	39.7	274
			0/90/90/0	0.32	45.91	1556	0.046	1.18	2210	15.2	106.0	731	2090	14.4	45.6	314	1110	7.7	50.8	350	2150	14.8	57.4	396

¹ Nominal thicknesses indicated are baseline values that may vary depending on material processing and other variables. Contact Avient with your specific requirements.

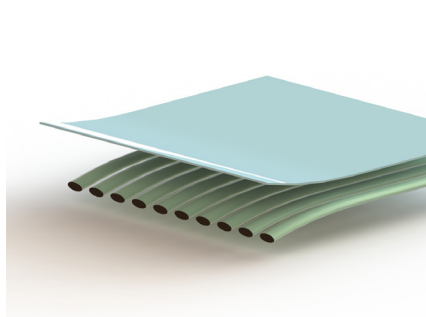
² No break occurred in testing.



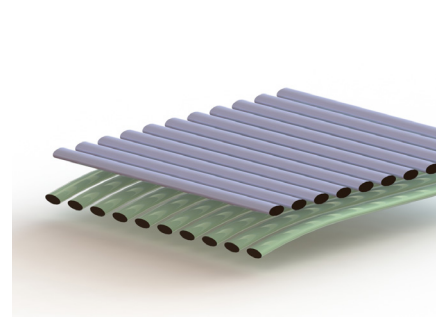
LAMINATION LAY-UP CONFIGURATIONS



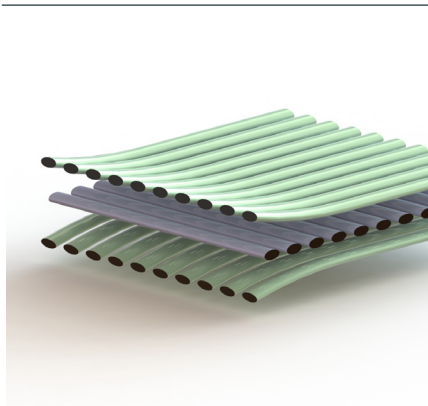
Unidirectional Tape



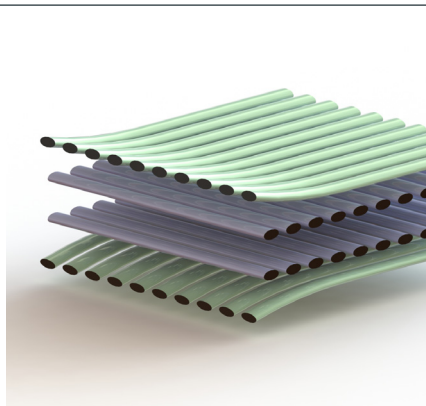
Uni Tape with Scrim



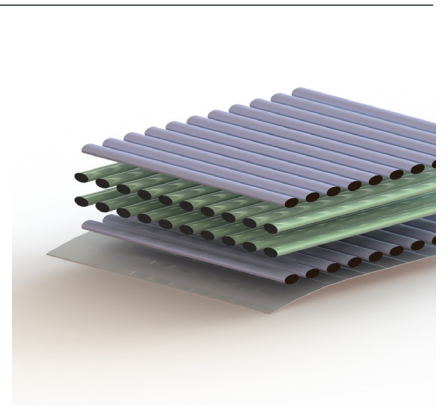
X-Ply™ 0°/90°



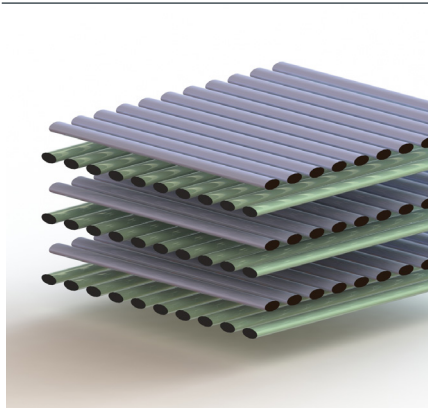
3-Ply 0°/90°/0°



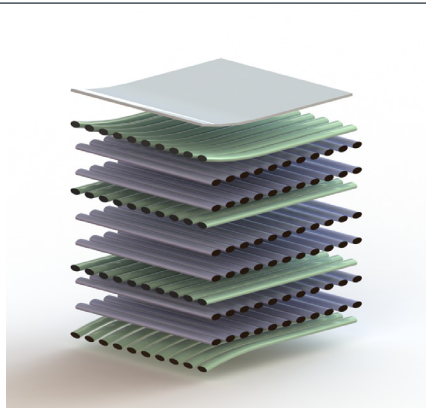
4-Ply 0°/90°/90°/0°



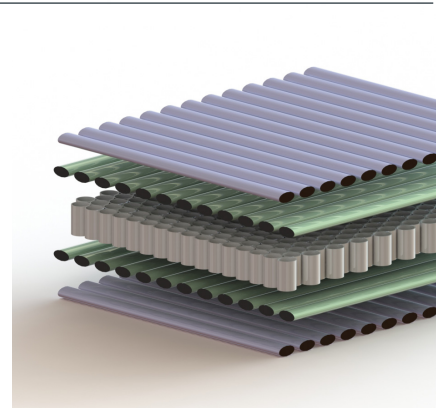
4-Ply 90°/0°/0°/90° with Film



6-Ply



10-Ply with Film



**Honeycomb
Core, X-Ply™ Skins**

1.844.4AVIENT
www.avient.com



Copyright © 2021, Avient Corporation. Avient makes no representations, guarantees, or warranties of any kind with respect to the information contained in this document about its accuracy, suitability for particular applications, or the results obtained or obtainable using the information. Some of the information arises from laboratory work with small-scale equipment which may not provide a reliable indication of performance or properties obtained or obtainable on larger-scale equipment. Values reported as "typical" or stated without a range do not state minimum or maximum properties; consult your sales representative for property ranges and min/max specifications. Processing conditions can cause material properties to shift from the values stated in the information. Avient makes no warranties or guarantees respecting suitability of either Avient's products or the information for your process or end-use application. You have the responsibility to conduct full-scale end-product performance testing to determine suitability in your application, and you assume all risk and liability arising from your use of the information and/or use or handling of any product. AVIENT MAKES NO WARRANTIES, EXPRESS OR IMPLIED, INCLUDING, BUT NOT LIMITED TO, IMPLIED WARRANTIES OF MERCHANTABILITY AND FITNESS FOR A PARTICULAR PURPOSE, either with respect to the information or products reflected by the information. This literature shall NOT operate as permission, recommendation, or inducement to practice any patented invention without permission of the patent owner.